

ALPENINOX

CRIO Chill Smart Blast Chiller Crosswise 10 1/1 - 28kg

ITEM # _____

MODEL # _____

NAME # _____

SIS # _____

AIA # _____



728211 (EABP0201)

Blast chiller 28kg, compatible with 10x1/1GN crosswise oven (R134a)

Short Form Specification

Item No.

For 10 GN1/1 or 600x400 mm trays. Load capacity: chilling 28 kg; (UK guidelines). Main components in 304 AISI stainless steel. Internal rounded corners and drain. Right hinged, reversible full door. Built-in refrigeration unit. Automatic detection of food probe insertion. Automatic and Manual defrost. Blast chilling real residual time estimation (A.R.T.E.). Turbo cooling function. Specific cycles for ice cream. Evaporator with antirust protection. Digital temperature and time display. HACCP and Service alarms with data logging. Operating air temperature: +90 -12°C. For ambient temperatures up to 32°C. Cyclopentane insulation (HCFC, CFC and HFC free). R134a refrigerant gas (HCFC and CFC free).

Main Features

- Blast Chilling cycle: 28 kg from 90°C up to 3°C in less than 90 minutes.
- Hard Chilling (air temperature -12°C).
- Holding at 3 °C for chilling, automatically activated at the end of each cycle, to save energy and maintain the target temperature (manual activation is also possible).
- Turbo cooling: chiller works continuously at the desired temperature; ideal for continuous production.
- Control unit provides two large displays to read out: time, core temperature, cycle countdown, alarms, service information.
- Two customizable cycles (P1 & P2) for each operating mode, allowing to set the time and air temperature. These programs can be converted into ice-cream specialized cycles (shape maintenance and holding).
- All information related to the different operating models are recorded: date, time, cycle, core temperature, holding temperature, HACCP accordance.
- Remaining time estimation for probe-driven cycles based on artificial intelligence techniques (ARTE) for an easier planning of the activities.
- Single sensor core probe as standard.
- Automatic and manual defrosting.
- Soft Chilling (air temperature -2°C).
- Performance guaranteed at ambient temperatures of +40°C.

Construction

- High density polyurethane insulation, 60 mm thickness, HCFC free.
- 304 AISI stainless steel construction throughout.
- Seamless hygienic inner cell with all rounded corners for easy cleaning.
- Swing hinged front panel for easy service access to main components.
- Ventilator swinging hinged panel for access to the evaporator for cleaning.
- No water connections required.
- Waste water can be plumbed into drain, but can also be collected in an optional waste container.
- Refrigerant type: R134a.
- Built-in refrigeration unit.
- Removable magnetic door gasket with hygienic design.

APPROVAL: _____

Part of



Electrolux
Professional
Group

ALPENINOX
www.alpeninox.com

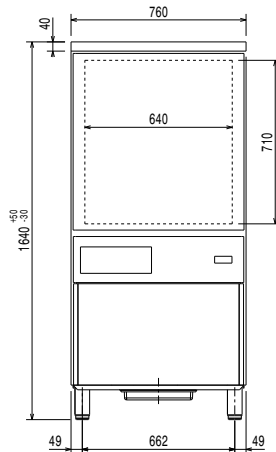
Included Accessories

- 1 of 1 single sensor probe for blast chiller and blast chillers&freezer PNC 880213

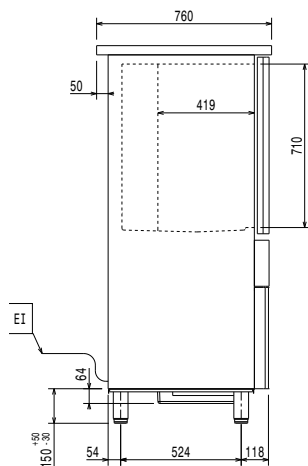
Optional Accessories

- Kit of HACCP advanced connection for blast chiller and blast chillers/freezers PNC 880183
- 1 single sensor probe for blast chiller and blast chillers&freezer PNC 880213
- Rilsan grid 600x400mm PNC 880864
- Plastic coated grid for refrigerated counters PNC 881061
- 4 wheels for blast chillers PNC 881097
- Roll-in guide runners for 28kg blast chillers and blast chiller/freezers 1/1GN PNC 881518
- Pair of 1/1GN grids in 304 AISI PNC 921101
- 80mm pitch side hangers for 10x1/1GN electric oven PNC 922115
- 80mm pitch side hangers for 10x1/1GN gas oven PNC 922116
- 60mm pitch side hangers for 10x1/1GN electric oven PNC 922121
- 60mm pitch side hangers for 10x1/1GN gas oven PNC 922122
- Trolley for 10x2/1GN roll-in rack PNC 922128
- Trolley for 10x1/1GN roll-in rack PNC 922130
- Kit to convert to 10x1/1GN roll-in rack PNC 922201
- ETHERNET CONNECTOR FOR ECAP PROTOCOL ITEMS PNC 922768

Front

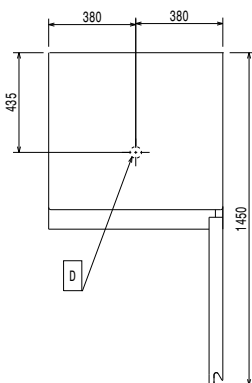


Side



EI = Electrical inlet (power)

Top



Electric

Supply voltage:	728211 (EABP0201)	220-240 V/1 ph/50 Hz
Electrical power max.:		1.21 kW
Circuit breaker required		

Installation:

Clearance:	5 cm on sides and back.
Please see and follow detailed installation instructions provided with the unit	

Capacity:

Max load capacity:	28 kg
GN:	10 - 1/1 containers

Key Information:

External dimensions, Width:	760 mm
External dimensions, Depth:	760 mm
External dimensions, Height:	1640 mm
Net weight:	124 kg
Shipping weight:	144 kg
Shipping volume:	1.33 m ³
Chilling-Freezing Productivity per cycle (NF Regulations):	21.6 kg - 0 kg
Chilling-Freezing Productivity per cycle (UK Guidelines):	27 kg - 0 kg

Refrigeration Data

Compressor power:	1 hp
Refrigeration power at evaporation temperature:	-10 °C

Product Information (EN17032 – Commission Regulation EU 2015/1095)

Chilling Cycle Time (+65°C to +10°C):	116 min
Full load capacity (chilling):	40 kg

Sustainability

Refrigerant type:	R134a
Refrigeration power:	1419 W
Refrigerant weight:	1530 g
Energy consumption, cycle (chilling):	0.053 kWh/kg